

# MONTHLY MEMBERSHIP PROGRESS REPORT

District A 5

Results as of: 5/31/2020

GMT:

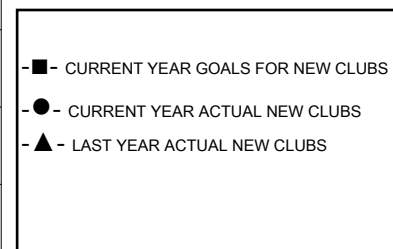
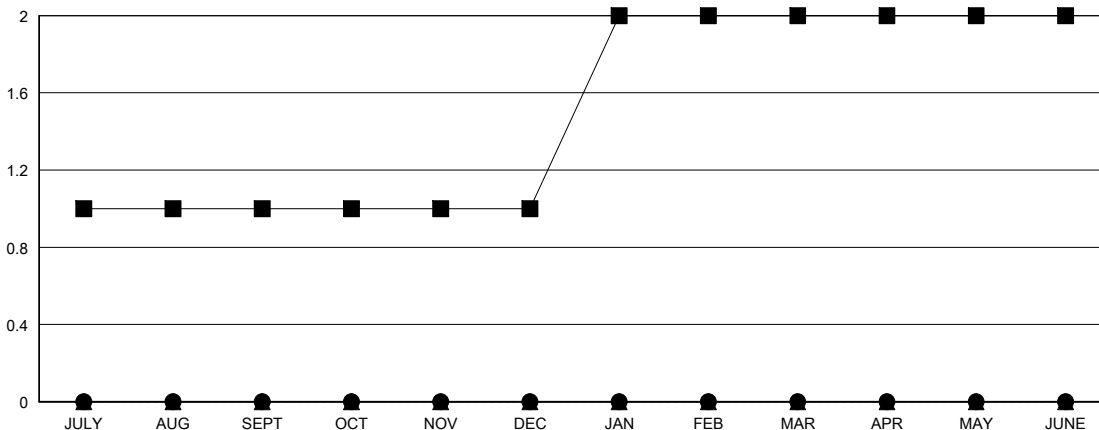
LOCATION ONTARIO

GMT CA

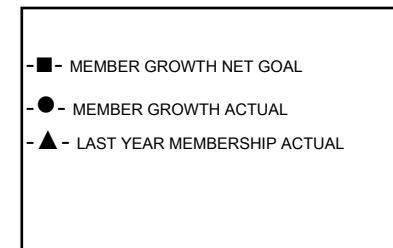
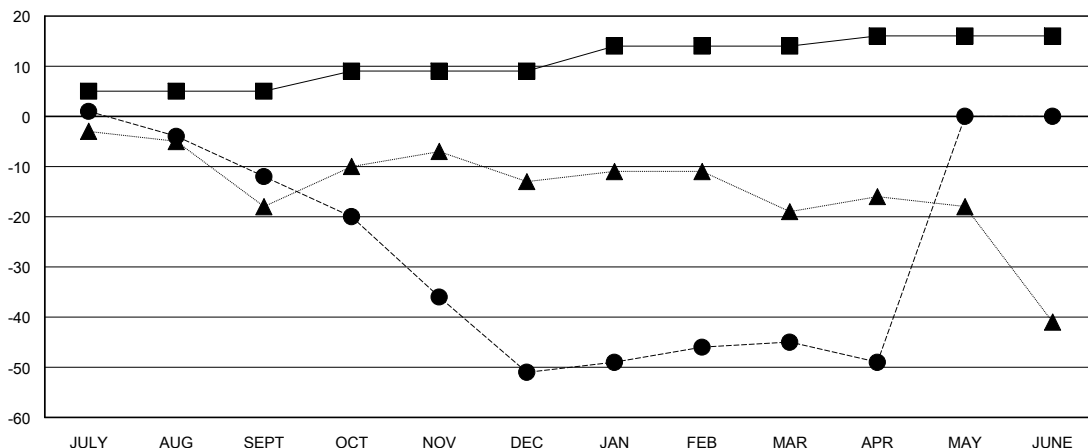
| Clubs                 |               |           |               |
|-----------------------|---------------|-----------|---------------|
| RESULTS FOR 2019-2020 |               |           |               |
| QUARTER               | NEW CLUB GOAL | NEW CLUBS | DROPPED CLUBS |
| JULY/AUG/SEPT         | 1             | 0         | 0             |
| OCT/NOV/DEC           | 0             | 0         | 0             |
| JAN/FEB/MAR           | 1             | 0         | 1             |
| APR/MAY/JUNE          | 0             | 0         | 0             |

| Members               |                        |                      |  |
|-----------------------|------------------------|----------------------|--|
| RESULTS FOR 2019-2020 |                        |                      |  |
| QUARTER               | MEMBER GROWTH NET GOAL | MEMBER GROWTH ACTUAL | DROPPED MEMBERS ACTUAL (including transfers) |
| JULY/AUG/SEPT         | 5                      | 14                   | 24   |
| OCT/NOV/DEC           | 4                      | 18                   | 55   |
| JAN/FEB/MAR           | 5                      | 40                   | 30   |
| APR/MAY/JUNE          | 2                      | 6                    | 8  |

GOALS AND ACTUAL NEW CLUBS CUMULATIVE



GOALS AND ACTUAL MEMBERS CUMULATIVE



|  |   |  |
|--|---|--|
| DROPPED CLUBS: 1   | 28 CLUBS OF 52 ADDED 1 OR MORE NEW MEMBERS                | <b>GENDER DISTRIBUTION</b><br>MALE 657 (56.74%)<br>FEMALE 501 (43.26%) |
| <b>DROPPED MEMBERS</b><br>DECEASED 23<br>CLUB CANCELLED 0<br>OTHER 94<br>TOTAL 117 | <a href="#">CLICK HERE FOR CUMULATIVE MEMBERSHIP DATA</a> | TOTAL FAMILY UNIT MEMBERS 222<br>FAMILY MEMBERS PAYING HALF DUES 112   |